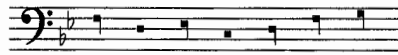


Mass-pair

Credo (I)

John Benet

Edited by Gareth Curtis



Cre- do in u- num de- um.

Ox, f. 221^v, 224^r; 93, ff. 258^v-259^r; 90, ff. 188^v-189^r; *MuEm*, ff. 141^v-142^r

I
 Pa- trem om- ni- po-

II
 [Contratenor]
 Pa- trem om- ni- po-

III
 Tenor
 Pa- trem om- po-

6
 I
 ten- tem fac- to- rem ce- li et ter-

II
 ten- tem fac- to- rem ce- li et ter-
Et in u- num

III
 ten- tem fac- to- rem ce-

13
 I
 re vi- si- bi- li- um om- ni-

II
 re vi- si- bi- li- um om- ni-
num ihe- sum cris- tum fi-

III
 li et ter- re vi- si- bi- li- um om- ni-

3 II Cb Cs, then no p.d. in 93/90 4-6 III E coloured-s D coloured-s F coloured-b (EDF lig) Fb G coloured-b in 93/90 and *MuEm* 9 II no Bs in *MuEm*
 13 III E dotted-s for 1st E 2nd E in *MuEm*; II FE are m in 93/90, Fm Fsm for F dotted-m in *MuEm*